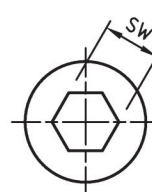
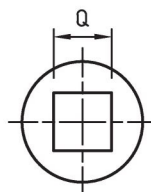
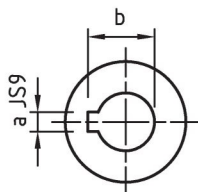
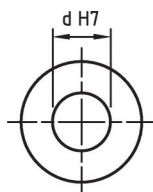
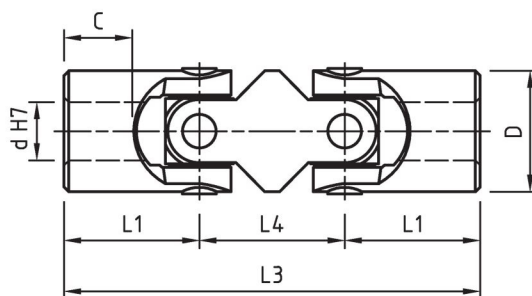


- Angolo max. 90°  
Max angle 90°
- "Esecuzione innesto rapido, vedi pagina 11".  
"Quick release execution, see page 11".
- "Esecuzione a morsetto tipo CL1 o CL2, vedi pagine 20 e 21".  
"Clamping hub execution type CL1 or CL2, see pages 20 and 21".
- Esecuzioni speciali a richiesta.  
Special executions on request.



Mod. Type	Codice / Code	d	D	L3	L1	L4	C	Codice / Code	a	b	Q *	SW *	Peso Weight Kg
01XD	SX0D 0600	6	16	56	17	22	8	SX0D062C	2	7	6	6	0,08
02XD	SX0D 0800	8	16	62	20	22	11	SX0D082C	2	9	8	8	0,08
03XD	SX0D 1000	10	22	74	24	26	12	SX0D102C	3	11,4	10	10	0,15
04XD	SX0D 1200	12	25	86	28	30	13	SX0D122C	4	13,8	12	12	0,25
05XD	SX0D 1400	14	28	96	30	36	14	SX0D142C	5	16,3	14	14	0,40
1XD	SX0D 1600	16	32	105	34	37	16	SX0D162C	5	18,3	16	16	0,45
3XD	SX0D 2000	20	42	129	41	47	18	SX0D202C	6	22,8	20	20	1,00
5XD	SX0D 2500	25	50	163	54	55	26	SX0D252C	8	28,3	25	25	2,00
6XD	SX0D 3000	30	58	190	61	68	29	SX0D302C	8	33,3	30	30	2,90

\*= Non sempre disponibile a magazzino / Not always available in stock

**Morskate®**



Any questions? Please contact us.

**Morskate Aandrijvingen BV**

Oosterveldsingel 47A  
7558 PJ Hengelo (Ov)  
The Netherlands

NL

T +31 (0)74 - 760 11 11  
info@morskateaandrijvingen.nl  
www.morskateaandrijvingen.nl

DE

T +49 692 - 222 34 95  
info@morskateantriebstechnik.de  
www.morskateantriebstechnik.de

EN

T +31 (0)74 - 760 11 11  
info@morskatedrivetechnology.com  
www.morskatedrivetechnology.com